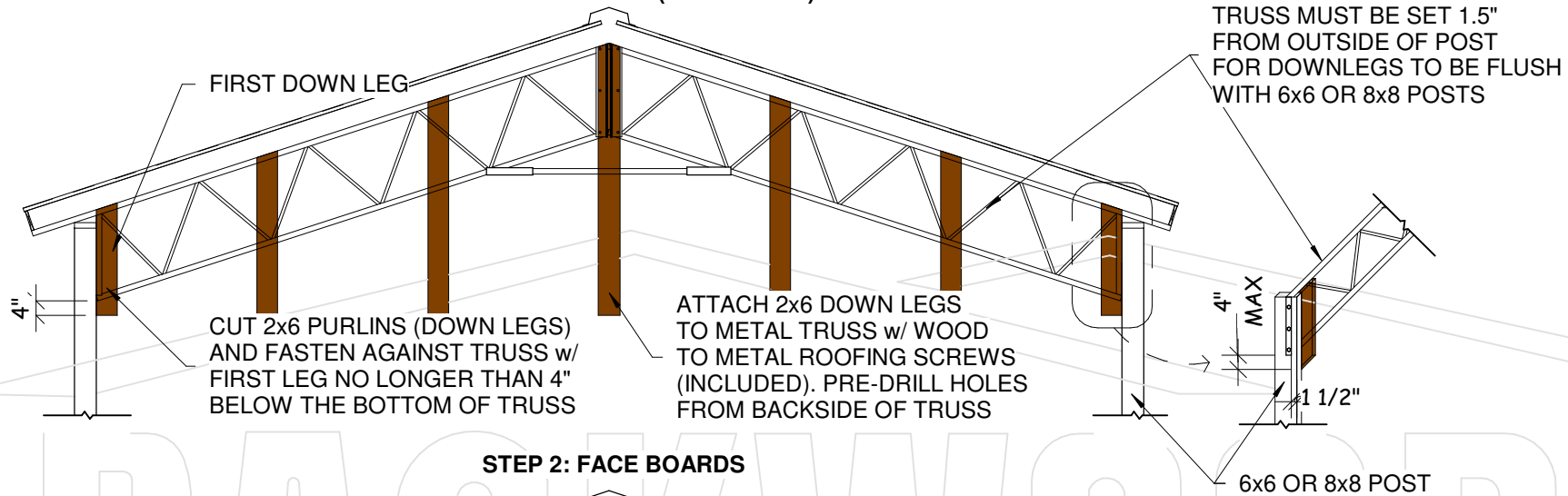
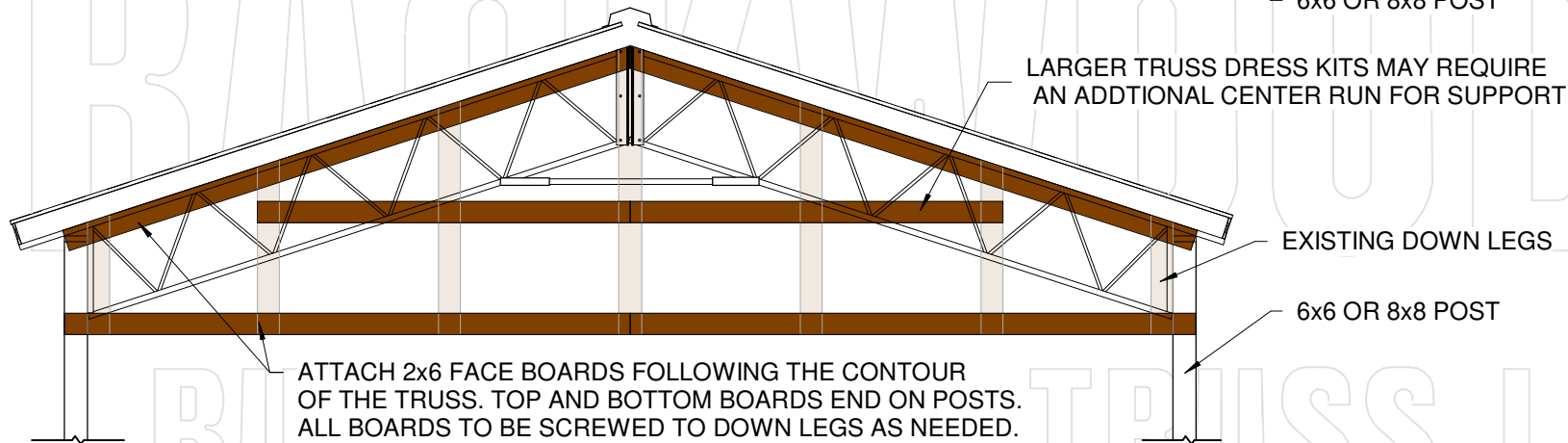


## GABLE DRESS DETAIL

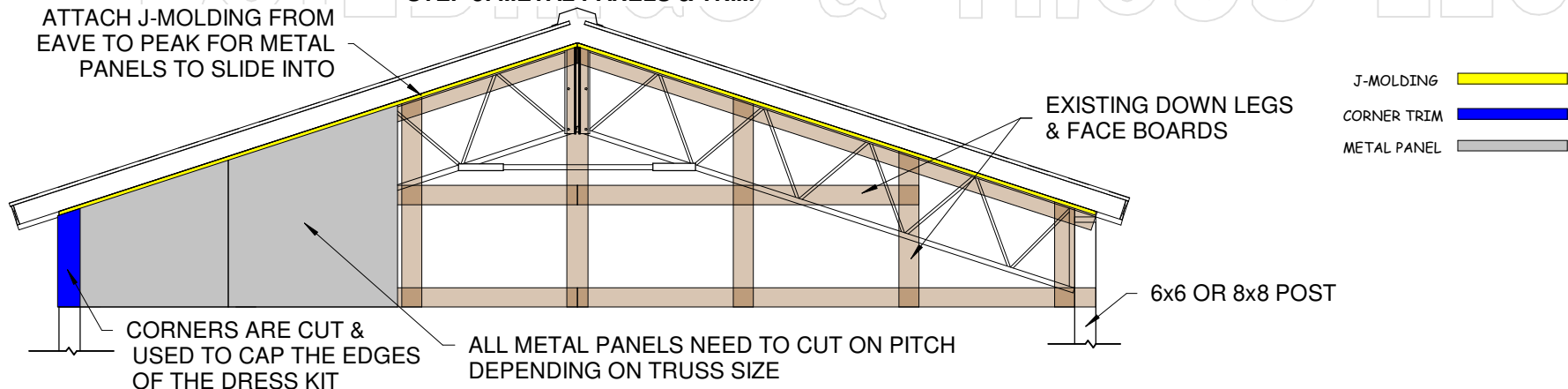
### STEP 1: PURLINS (DOWN LEGS)



### STEP 2: FACE BOARDS



### STEP 3: METAL PANELS & TRIM



#### DISCLAIMER:

DIY INSTRUCTIONS FOR VISUAL AID ONLY  
PLEASE CONSULT LOCAL BUILDING  
DEPARTMENT FOR CODE SPECIFICATIONS

#### BACKWOODS BUILDINGS & TRUSS LLC

1240 S. BLVD. CHIPLEY FLORIDA, 32428  
WEBSITE: [www.backwoodsbuildings.net](http://www.backwoodsbuildings.net)  
PHONE NO : (850)-676-4903

## BACKWOODS BUILDINGS & TRUSS LLC

## GABLE CONTOUR FRAMING

TRUSS SET 1.5" FROM OUTSIDE  
OF POST

ATTACH FACE BOARDS TO TRUSS, MATCH  
CONTOUR OF TRUSS. FACE BOARDS ARE FLUSH W/  
OUTSIDE OF POST

FACE BOARDS DOUBLE & WOOD SCREWED  
TOGETHER TO OVERLAP OUTSIDE OF POST

6x6 OR 8x8 POST

1 1/2"

1 1/2"

### DISCLAIMER:

DIY INSTRUCTIONS FOR VISUAL AID ONLY  
PLEASE CONSULT LOCAL BUILDING  
DEPARTMENT FOR CODE SPECIFICATIONS

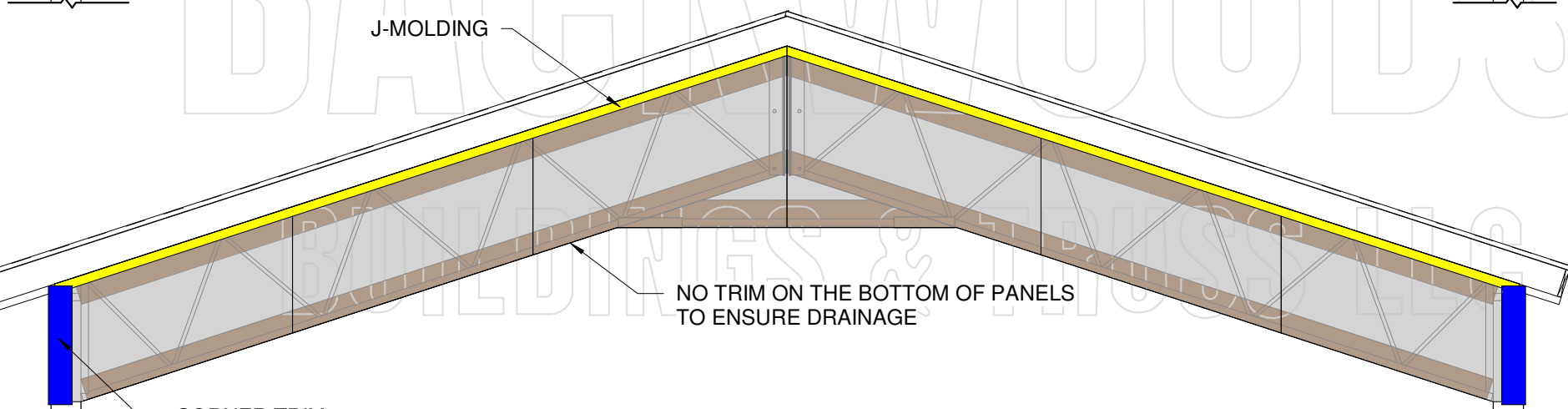
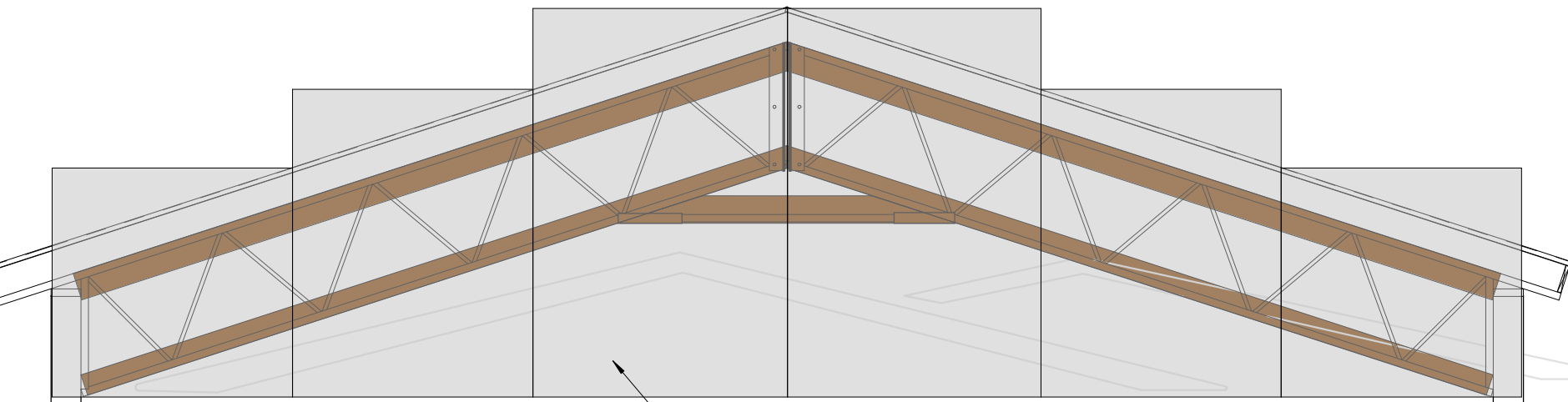
### BACKWOODS BUILDINGS & TRUSS LLC

1240 S. BLVD. CHIPLEY FLORIDA, 32428  
WEBSITE: [www.backwoodsbuildings.net](http://www.backwoodsbuildings.net)  
PHONE NO : (850)-676-4903

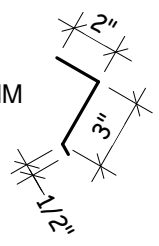
**BACKWOODS**  
BUILDINGS & TRUSS LLC

PAGE NO.

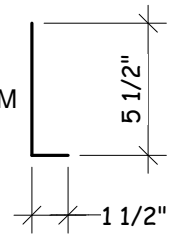
2



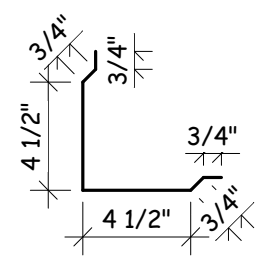
EAVE TRIM



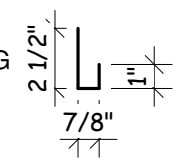
FASCIA TRIM



CORNER & RAKE TRIM



J-MOLDING

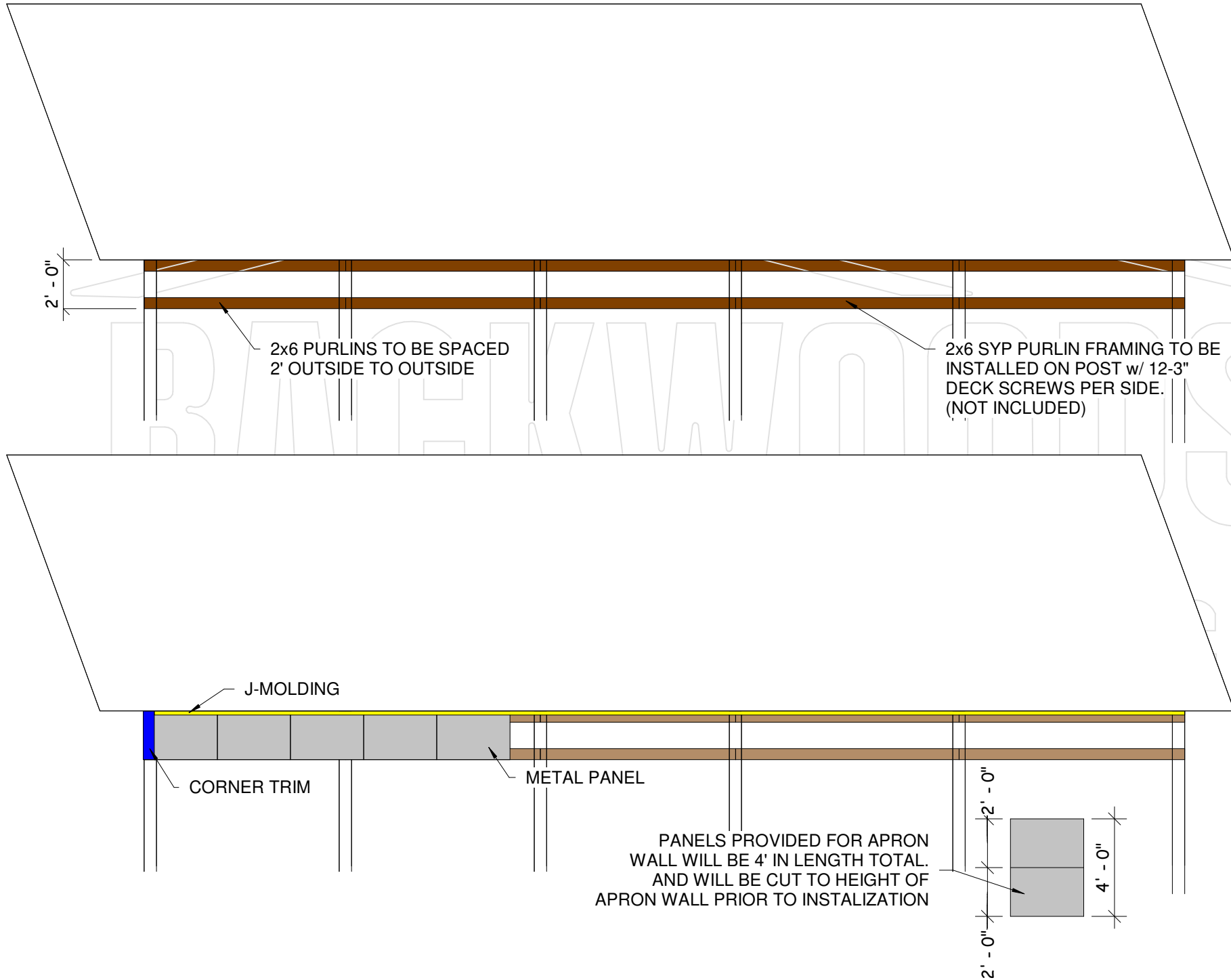


**DISCLAIMER:**  
DIY INSTRUCTIONS FOR VISUAL AID ONLY  
PLEASE CONSULT LOCAL BUILDING  
DEPARTMENT FOR CODE SPECIFICATIONS

**BACKWOODS BUILDINGS & TRUSS LLC**  
1240 S. BLVD. CHIPLEY FLORIDA, 32428  
WEBSITE: [www.backwoodsbuildings.net](http://www.backwoodsbuildings.net)  
PHONE NO : (850)-676-4903

**BACKWOODS**  
BUILDINGS & TRUSS LLC

## APRON WALL



**DISCLAIMER:**  
DIY INSTRUCTIONS FOR VISUAL AID ONLY  
PLEASE CONSULT LOCAL BUILDING  
DEPARTMENT FOR CODE SPECIFICATIONS

**BACKWOODS BUILDINGS & TRUSS LLC**  
1240 S. BLVD. CHIPLEY FLORIDA, 32428  
WEBSITE: [www.backwoodsbuildings.net](http://www.backwoodsbuildings.net)  
PHONE NO : (850)-676-4903

**BACKWOODS**  
BUILDINGS & TRUSS LLC

PAGE NO.

4